



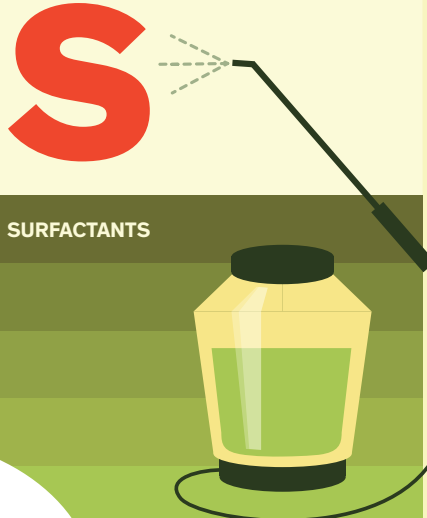


Steps for Successful Herbicide Tank Mixing

Tank-mixing herbicides ensures proper control of key weeds and can provide multi-mode of action (MMOA) control for mitigating herbicide resistance. Brush up on these best practices to ensure a seamless tank mixing process.

 <p>READ UP Always read and follow the label. Note which products you can and can't mix, and aim for MMOA control of key weeds.</p>	<p>SUIT UP Ensure proper personal protective equipment for the job.</p>  <ul style="list-style-type: none"> Goggles or face shield Long sleeves Gloves Pants Safety footwear 	<p>MIX UP For proper tank mixing order, just remember WALES. Ensure the tank, booms and nozzles are clean before mixing. Then, fill the tank to ~½ full with water and add water conditioners if required.</p> 
 <p>CHECK UP Check the weather! Wind speed, wind direction, rain and temperature all need to be considered.</p>		

For proper tank mixing order, just remember WALES.

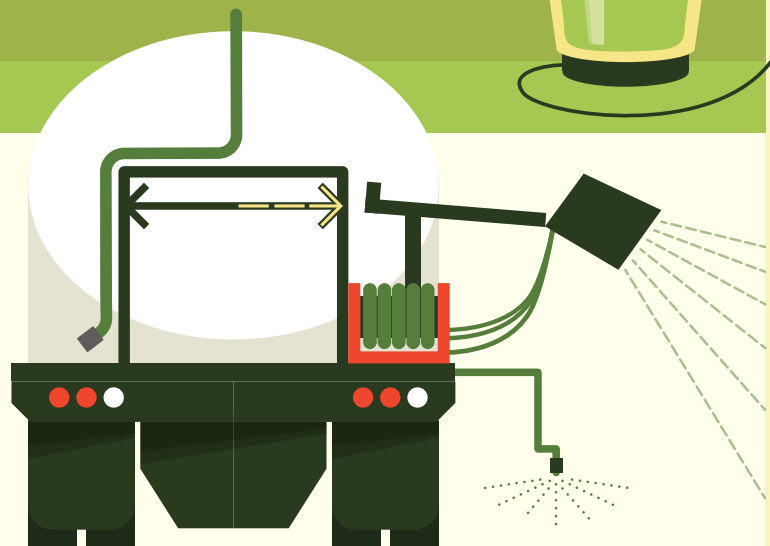
<p>Wettable powders and water dispersible granules (WP's, WDG's).</p> <p>W</p> <p>WETTABLE</p>	<p>Agitate and fully suspend the material between each product addition.</p> <p>A</p> <p>AGITATE</p>	<p>Liquid flowables and suspension concentrates (F, FL, SC's).</p> <p>L</p> <p>LIQUID</p>	<p>Emulsifiable concentrates (EC's).</p> <p>E</p> <p>EMULSIFIABLE</p>	<p>S</p> <p>SURFACTANTS</p> 
---	---	--	--	---

SPRAY OUT

Avoid leaving spray solutions in your tank overnight. If you must do so, ensure the spray solution is fully suspended with thorough agitation the following day.

CLEAN UP

Rinse your tank, booms, filters, screens and nozzles. We recommend rinsing with both clean water and a spray solution. See our product labels for more details.



For more information please call your IVM expert or visit ivmexperts.ca



Dow AgroSciences

Solutions for the Growing World

™ Trademark of the Dow Chemical Company ("Dow") or an affiliated company of Dow.

IVM Experts